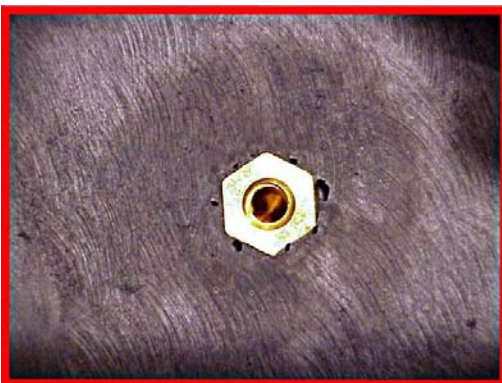


Surface Enhancer[®] - improve the quality of your product



If you have experienced problems with moulding tight corners, pinholes or achieving the surface finish you are looking for, then Surface Enhancer could help to solve your problems. Simply by spraying Surface Enhancer directly on to the problem area before moulding you can help eliminate these problems. After application simply fill the mould with powder and mould as normal. Surface Enhancer is one of our most popular products and is widely used throughout the European rotomoulding industry. Surface Enhancer is available to order from our E-shop at www.matrixpolymers.com or please contact one of our sales team for details.



KEY ADVANTAGES

- Improves the surface finish around metal inserts and threads
- Remove pinholes

KEY BENEFITS

- Eliminates bridging
- Reduces rejects
- Improves material flow around metal inserts



For additional information on Surface Enhancer and other ancillary products go to www.matrixpolymers.com or contact our Sales Team.

Consistently **delivering value**

22-40 Tenter Road, Moulton Park Industrial Estate, Northampton, NN3 6AX, United Kingdom.

Telephone: +44(0)1604 641640 Fax: +44(0)1604 641669 Email: info@matrixpolymers.com Website: www.matrixpolymers.com
Company registration No. 2626784. Registered Office as above



MEMBER